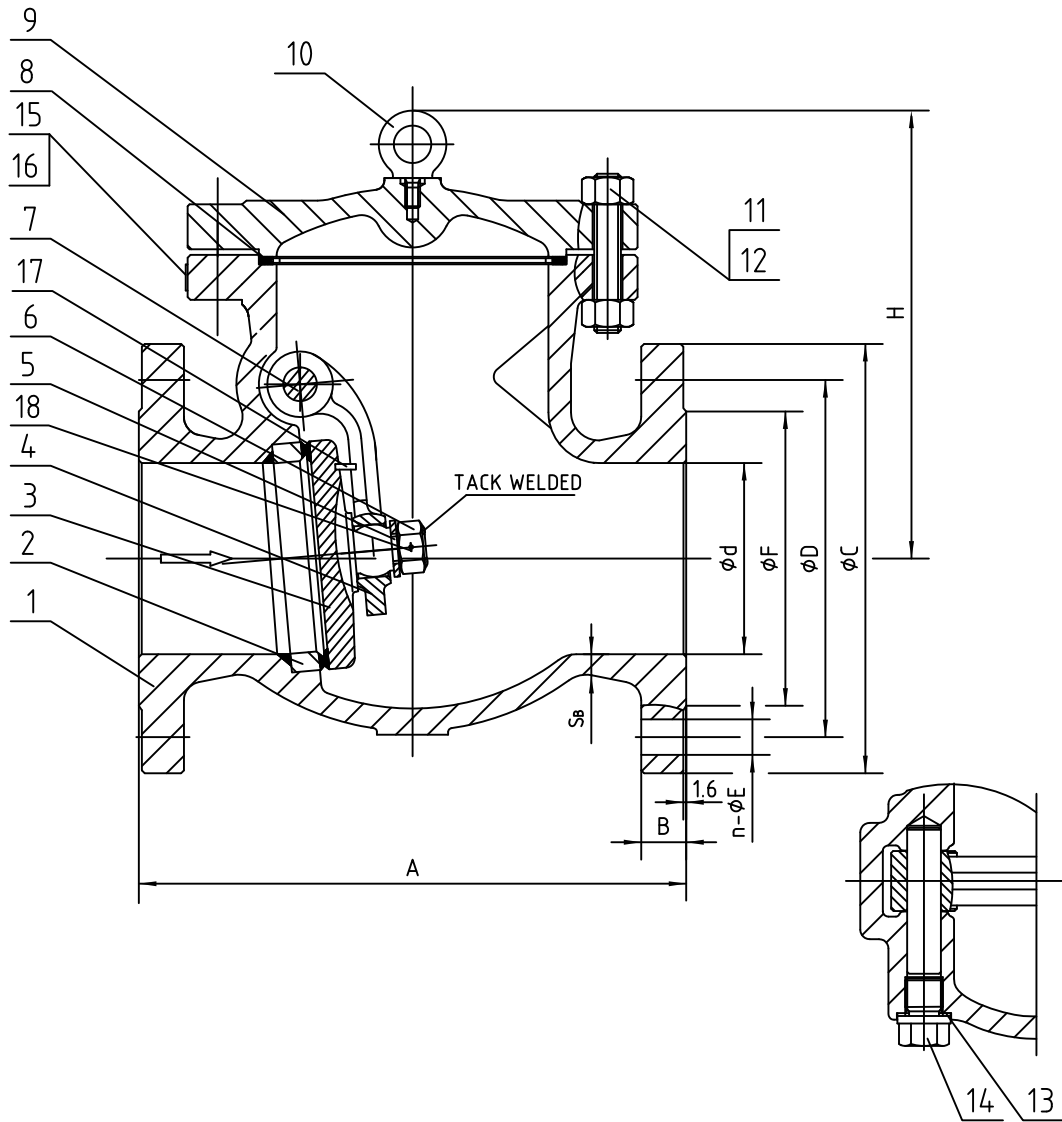


# Wm. E. Williams No. 151F62N Class 150 RF Swing Check Valve A216 WCB (API Trim 12) NACE



ITEM	NAME	MATERIAL	SPECIFICATION	NOTE
1	BODY	CAST STEEL	ASTM A216-WCB	NACE
2	BODY RING	CARBON STEEL	ASTM A105+HF	
3	DISC	CARBON STEEL	ASTM A105+316	
4	HINGE	CAST STEEL	ASTM A216-WCB	
5	GASKET	STAINLESS STEEL	ASTM A276-316	
6	NUT	STAINLESS STEEL	ASTM A276-316	
7	PIN	STAINLESS STEEL	ASTM A276-316	
8	GASKET		SS316+GRAPHITE	
9	BONNET	CAST STEEL	ASTM A216-WCB	
10	EYEBOLT	CARBON STEEL	ASTM A29-1035	
11	NUT	STEEL	ASTM A194-2HM	
12	BOLT	STEEL	ASTM A193-B7M	
13	GASKET	STAINLESS STEEL	ASTM A276-304	
14	PLUG	STAINLESS STEEL	ASTM A276-410	
15	NAMEPLATE	STAINLESS STEEL	304SS	
16	RIVET	STAINLESS STEEL	304SS	
17	PIN	CARBON STEEL	ASTM A29-1020	
18	PIN	STAINLESS STEEL	316SS	

SIZE	d	A	B	C	D	n	E	F	H	S <sub>b</sub>
2"	51	203	16	152	120.5	4	19	92	137	9
2-1/2"	64	216	17.5	178	139.5	4	19	105	157	9.5
3"	76	241	19	190	152.5	4	19	127	170	10.3
4"	102	292	24	229	190.5	8	19	157	229	11.1
5"	127	330	24	254	216	8	22	186	269	11.9
6"	152	356	26	279	241.5	8	22	216	273	11.9
8"	203	495	29	343	298.5	8	22	270	341	12.7
10"	254	622	31	406	362	12	25	324	403	14.3
12"	305	698	32	483	432	12	25	381	471	15.8
14"	337	787	35	533	476	12	29	413	510	16.6
16"	387	864	37	597	540	16	29	470	580	17.5
18"	438	978	40	635	578	16	32	533	605	18.2
20"	489	978	43	699	635	20	32	584	632	19
22"	540	1067	46	749.3	692.2	20	35	641.4	712	20
24"	591	1295	48	813	749.5	20	35	692	744	20.6

WILLIAM E. WILLIAMS VALVE CORPORATION  
 38-52 REVIEW AVENUE LONG ISLAND CITY, NY 11101  
 TEL: 718-992-1660 FAX: 718-729-5186

TITLE: CAST STEEL SWING CHECK VALVE CLASS 150 - API TRIM 12 - BC. RF

					MARKING SYSTEM	MSS-SP-25	INSPECTION & TEST: API 598	MATERIAL: ASTM A216 GR.WCB	UNITS: Inch, mm
					DIM. OF FLANGE	ANSI B16.5	SHELL HYDRO 450PSI	CLASS: 150	DATE: 03/31/15
					FACE TO FACE	ANSI B16.10	SEAT AIR N/A	SIZE: 2" - 24"	SCALE: N.T.S.
					WALL THICKNESS	ANSI B16.34	HPC SEAT HYDRO 315PSI	DRAWN BY: F.J.	FIG. No.: 151F62N
NO.	DATE	DESCRIPTION	PRP'D	REV'D	APP'D	DESIGNED	API 594, ANSI B16.34	NACE MR0175	CHK'D & APR'D BY: R.P.
								REV: 1	DWG No.: 60SC120090-28