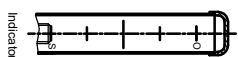
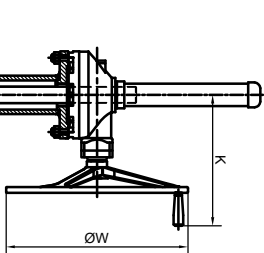
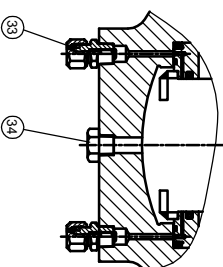
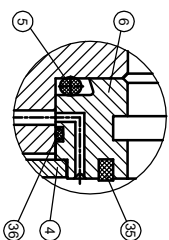
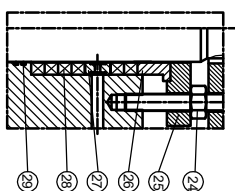
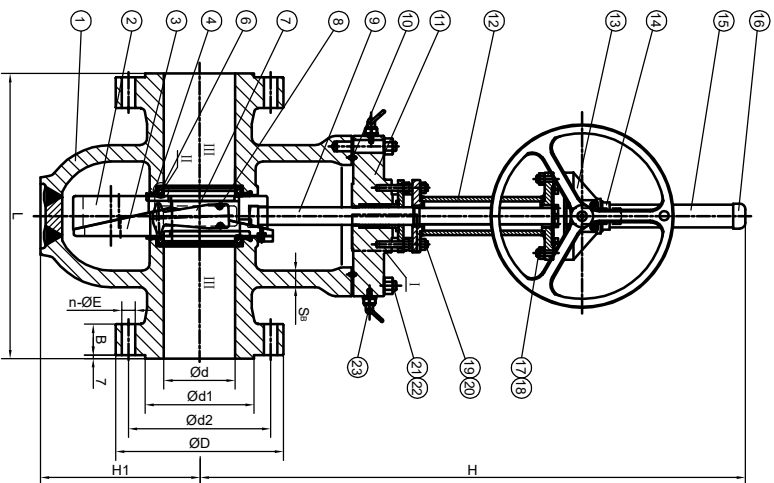
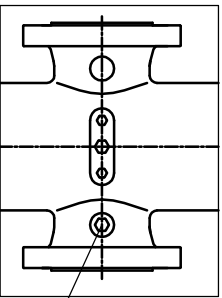


Wm. E. Williams No.159F61D WCC GO Class 1500 RF API 6D Expanding Gate Valve ASTM A216 WCC



ITEM	NAME	MATERIAL	NOTE
1	BODY	ASTM A216-WCC	
2	GATE	ASTM A216-WCC+STL+ENP	
3	SEGMENT	ASTM A216-WCC+STL+ENP	
4	SKIRT	ASTM A276-410	
5	O RING	VITON AED	
6	SEAT	ASTM A105N+ENP	
7	GATE CENTRALIZER	ASTM A276-410	
8	PIN	ASTM A276-410	
9	STEM	ASTM A182-F316	
10	RTJ GASKET	ASTM A276-316	
11	BONNET	ASTM A105N	
12	YOKE TUBE ASSLY	ASTM 1020	
13	GEAR BOX	ASTM A216-WCB	
14	CONNECTING NUT	PLASTIC	
15	STEM PROTECTOR	POLYCARBONATE ROUND TUBES	
16	DUST COVER CAP	PLASTIC	
17	BOLT	ASTM A193-B7M	
18	NUT	ASTM A194-2HM	
19	BOLT	ASTM A193-B7M	
20	NUT	ASTM A194-2HM	
21	BOLT	ASTM A193-B7M	
22	NUT	ASTM A194-2HM	
23	LIFT	ANSI 4140	
24	NUT	ASTM A194-2HM	
25	GLAND FLANGE	ASTM A216-WCC	
26	GLAND FOLLOWER	ASTM A276-316	
27	LANITERN RING	ASTM A276-316	
28	PACKING	INCONEL600+GRAPHITE	
29	O RING	VITON AED	
30	PACKING FITTING	ASTM A276-316	
31	AUTOVENT VALVE	ASTM A276-316	
32	VENT VALVE	ASTM A276-316	
33	INJECTION FITTING	ASTM A276-316	
34	PLUG	ASTM A276-316	
35	SEAT INSERT	DEVLON	
36	O RING	VITON AED	

ITEM	FIG NO.	SIZE	UNIT	d	d1	d2	D	B	n	E	L	H	H1	W	K	Sa	Weight(lbs/ks)
01	159F61D WCC GO	8"	mm	192	289.9	393.7	485	92.1	12	45	832	1310	440	610	420	47.8	2480/1125
02	159F61D WCC GO	10"	mm	239	323.8	482.6	585	108	12	51	991	1473	520	710	500	57.2	3131/1420
03	159F61D WCC GO	12"	mm	287	381	571.5	675	123.9	16	54	1130	1844	640	710	500	66.8	3560/1615
		12"	in	11.31	15.00	22.50	26.50	4.88	16	2-1/8	44.50	72.6	25.2	28.0	19.69	2.63	



NO.	DATE	DESCRIPTION	PRPD	REV'D	APP'D	DESIGNED	API 6D	ANSI B16.34	FACE TO FACE	WALL THICKNESS	MARKING SYSTEM	MSS-SP-26	INSPECTION & TEST API 6D	HYDRO	80PSI	SIZE: 8"-12"	SCALE: N.T.S.	FIG. No.:	159F61D WCC GO
1	08/27/20	RELEASED	F.J.	E.C.	E.C.	DESIGNED	API 6D	ANSI B16.34	FACE TO FACE	WALL THICKNESS	MARKING SYSTEM	MSS-SP-26	INSPECTION & TEST API 6D	HYDRO	80PSI	SIZE: 8"-12"	SCALE: N.T.S.	FIG. No.:	159F61D WCC GO

WILLIAM E. WILLIAMS
VALVE CORPORATION
9850 REVIEW AVENUE
LONG BEACH, CA 90801
TEL: 714-932-1600
FAX: 714-932-5106

TITLE: CAST STEEL API 6D EXPANDING GATE VALVE
CLASS 1500 - API 6D - RF - GEAR OPERATED

MATERIAL: ASTM A216 WCC
CLASS: 1500
DATE: 08/27/20
UNITS: inch, mm
SCALE: N.T.S.
FIG. No.: 159F61D WCC GO
CHK'D & APP'D BY: E.C.
REV: 1
DWG NO.: