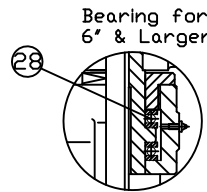
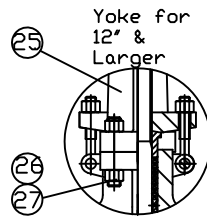
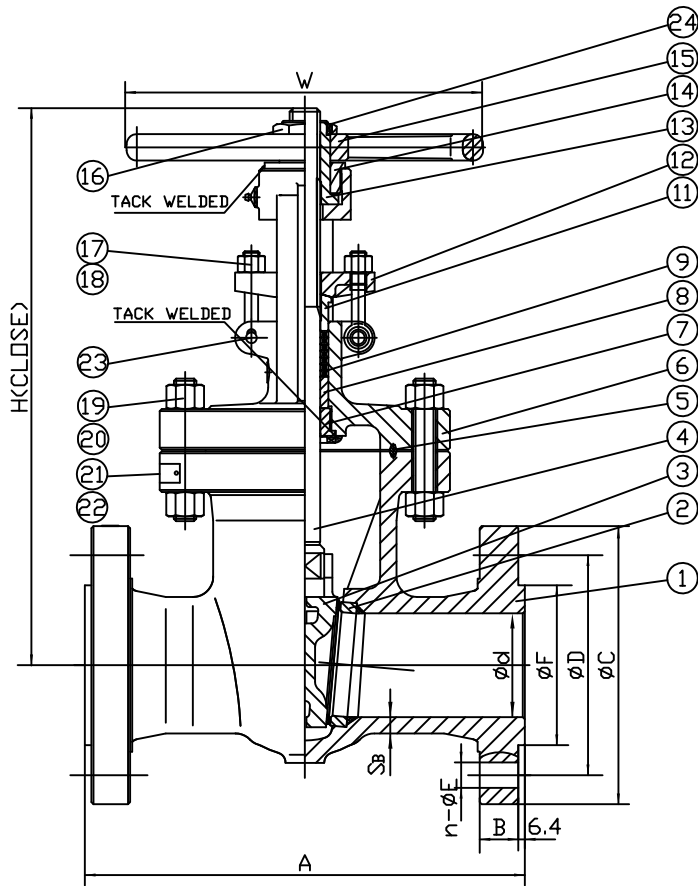


Wm. E. Williams No. 60F62N Class 600 RF OS&Y Gate Valve ASTM A216 WCB (API Trim 12) NACE



ITEM	NAME	MATERIAL	SPECIFICATION	NOTE
1	BODY	CAST STEEL	ASTM A216-WCB	
2	BODY RING	CARBON STEEL	ASTM A105+HF	
3	GATE	CAST STEEL	ASTM A216-WCB+316	
4	STEM	STAINLESS STEEL	ASTM A182-F316	
5	GASKET,RING JIONT	STEEL	08F	
6	BONNET	CAST STEEL	ASTM A216-WCB	
7	BACKSEAT	STAINLESS STEEL	ASTM A276-316	
8	PACKING CUSHION	STAINLESS STEEL	ASTM A276-410	
9	PACKING RING	INCONEL WIRE WITH GRAPHITE		
11	GLAND	STAINLESS STEEL	ASTM A276-410	
12	GLAND FLANGE	CAST STEEL	ASTM A216-WCB	NACE
13	STEM NUT	NODULAR CAST IRON	ASTM A439 D-2	
14	GLAND NUT	CARBON STEEL	ASTM A29-1035	
15	HANDWHEEL	NODULAR CAST IRON		
16	HANDWHEEL NUT	CARBON STEEL	ASTM A29-1035	
17	EYE BOLT	STEEL	ASTM A193-B7M	
18	EYE BOLT NUT	STEEL	ASTM A194-2HM	
19	BONNET BOLT	STEEL	ASTM A193-B7M	
20	BONNET NUT	STEEL	ASTM A194-2HM	
21	NAMEPLATE	STAINLESS STEEL	304SS	
22	RIVET	STAINLESS STEEL	304SS	
23	PIN	CARBON STEEL	ASTM A29-1035	
24	SCREW	CARBON STEEL	ASTM A29-1035	
25	YOKE	CAST STEEL	ASTM A216-WCB	
26	YOKE BOLT	STEEL	ASTM A193-B7M	
27	YOKE NUT	STEEL	ASTM A194-2HM	
28	BEARING	STEEL		

NOTE:
1. FLEXIBLE WEDGE

SIZE	d	A	B	C	D	n	E	F	H	W	S _b
2"	51	292	26	165	127	8	19	92	370	200	11.5
2.5"	64	330	29	190	149	8	22	105	422	250	11.9
3"	76	356	32	210	168	8	22	127	449	250	13
4"	102	432	38	273	216	8	25	157	539	300	16
5"	127	508	44.5	330	266.5	8	29	186	597	400	18.5
6"	152	559	48	356	292	12	29	216	645	450	19.1
8"	200	660	56	419	349	12	32	270	838	500	26
10"	248	787	64	508	432	16	35	324	974	640	29
12"	298	838	67	559	489	20	35	381	1152	640	32
14"	327	889	70	603	527	20	38	413	1290	720	35.1
16"	375	991	77	686	603	20	41	470	1379	720	38.5

Remark: Larger sizes available upon request

WILLIAM E. WILLIAMS VALVE CORPORATION
 38-52 REVIEW AVENUE LONG ISLAND CITY, NY 11101
 TEL: 718-399-1660 FAX: 718-729-5106

TITLE: CAST STEEL GATE VALVE
CLASS 600 - API TRIM 12 - R,F B,B OS&Y

MARKING SYSTEM	MSS-SP-25	INSPECTION & TEST: API 598	MATERIAL: ASTM A216 GR.WCB	UNITS: Inch, mm
DIM.OF FLANGE	ANSI B16.5	SHELL HYDRO 2250PSI	CLASS: 600	DATE: 01/12/15
FACE TO FACE	ANSI B16.10	SEAT AIR 80PSI	SIZE: 2" - 16"	SCALE: N.T.S.
WALL THICKNESS	API 600	BACK SEAT HYDRO 1630PSI	DRAWN BY: F.J.	FIG. No.: 60F-62N
NO.	DATE	DESCRIPTION	PRP'D	REV'D
DESIGNED	API 600, ANSI B16.34	NACE MR 0175	CHK'D & APR'D BY: R.P.	REV: 1
			DWG No.: 60GA120015-28	