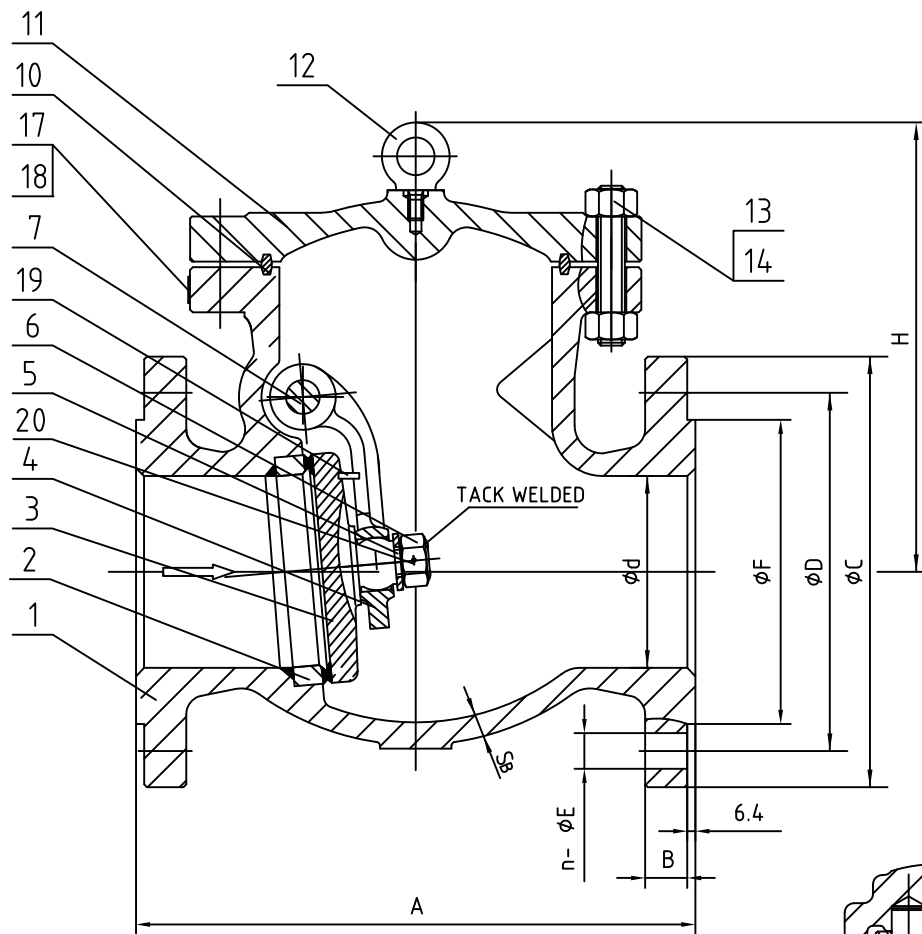


Wm. E. Williams No. 901F2N Class 900 RF Swing Check Valve ASTM A216 WCB (API Trim 8) NACE



ITEM	NAME	MATERIAL	SPECIFICATION	NOTE
1	BODY	CAST STEEL	ASTM A216-WCB	NACE
2	BODY RING	CARBON STEEL	ASTM A105+HF	
3	DISC	CARBON STEEL	ASTM A105+13%Cr	
4	HINGE	CAST STEEL	ASTM A216-WCB	
5	GASKET	STAINLESS STEEL	ASTM A276-410	
6	NUT	STAINLESS STEEL	ASTM A276-410	
7	PIN	STAINLESS STEEL	ASTM A276-410	
10	GASKET, RING JOINT	STEEL	08F	
11	BONNET	CAST STEEL	ASTM A216-WCB	
12	EYEBOLT	CARBON STEEL	ASTM A29-1035	
13	NUT	STEEL	ASTM A194-2HM	
14	BOLT	STEEL	ASTM A193-B7M	
15	GASKET	STAINLESS STEEL	ASTM A276-304	
16	PLUG	STAINLESS STEEL	ASTM A276-410	
17	NAMEPLATE	STAINLESS STEEL	304SS	
18	RIVET	STAINLESS STEEL	304SS	
19	PIN	CARBON STEEL	ASTM A29-1020	
20	PIN	STAINLESS STEEL	316SS	

SIZE	d	A	B	C	D	n	E	F	H	S _B
2-1/2"	57	419.1	41.5	244	190.5	8	29	105	293	22.2
3"	73	381	38.5	241	190.5	8	26	127	254	19.1
4"	98	457	44.5	292	234.9	8	32	157	276	21.4
6"	146	610	56	381	317.5	12	32	216	375	26.2
8"	190	737	63.5	470	393.7	12	39	270	505	32
10"	238	838	70	545	469.9	16	39	324	500	36.6
12"	282	965	79.5	610	533.4	20	39	381	566	42.2

WILLIAM E. WILLIAMS VALVE CORPORATION
 38-52 REVIEW AVENUE LONG ISLAND CITY, NY 11101
 TEL: 718-392-1660 FAX: 718-729-5106
 WWW.WILLIAMSVALVE.COM

TITLE: CAST STEEL SWING CHECK VALVE CLASS 900 - API TRIM 8 - BC, RF

4/6/15	RE-RELEASED	F.J.	R.P.	R.P.	MARKING SYSTEM	MSS-SP-25	INSPECTION & TEST: API 598	MATERIAL: ASTM A216 GR.WCB	UNITS: Inch, mm
3/15/13	RE-RELEASED	F.J.	R.P.	R.P.	DIM.OF FLANGE	ANSI B16.5	SHELL HYDRO 3350PSI	CLASS: 900	DATE: 01/01/12
1/1/12	RELEASED	F.J.	R.P.	R.P.	FACE TO FACE	ANSI B16.10	SEAT AIR N/A	SIZE: 2.5" - 12"	SCALE: N.T.S.
					WALL THICKNESS	ANSI B16.34	HPC SEAT HYDRO 2450PSI	DRAWN BY: F.J.	FIG. No.: 901F-2N
NO.	DATE	DESCRIPTION	PRP'D	REV'D	APP'D	DESIGNED	API 594, ANSI B16.34	NACE MR0175	CHK'D & APR'D BY: R.P.
									REV: 3 DWG No.: 60SC120130-28