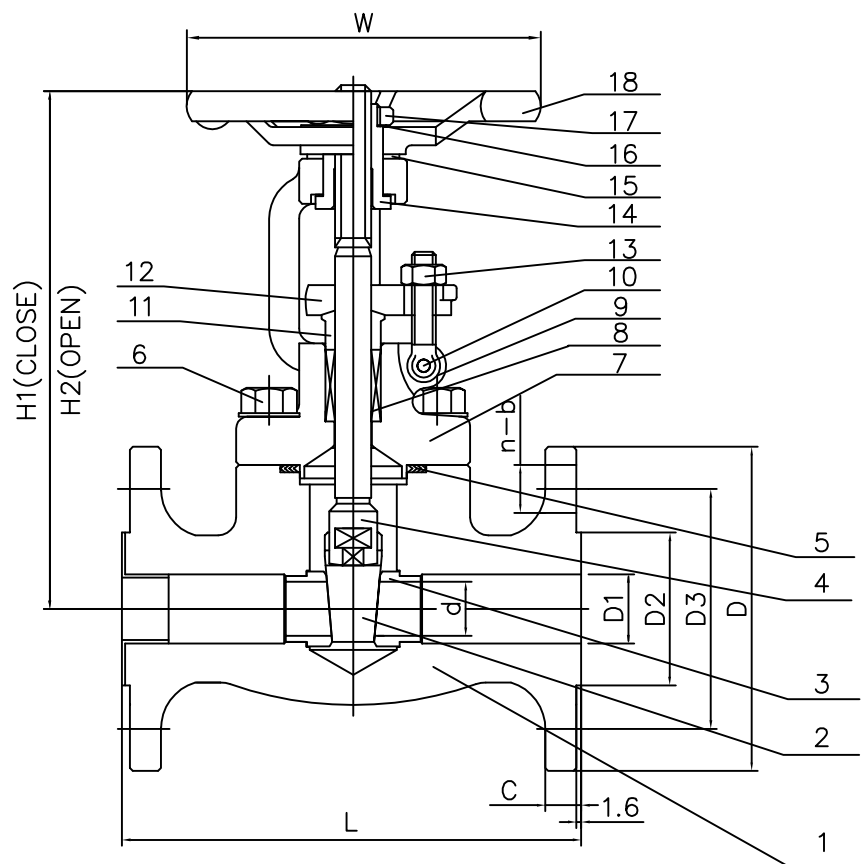


Wm. E. Williams No. F30F2N Class 300 RF OS&Y BB Gate Valve A105N (API Trim 8) NACE



| ITEM | PART NAME | QTY | MATERIAL |
|------|----------------|------|--|
| 1 | Body | 1 | A105N |
| 2 | Disc | 1 | A276-410 |
| 3 | Seat ring | 2 | A105N+HF |
| 4 | Stem | 1 | A276-410 |
| 5 | Gasket | 1 | 304+Graphite |
| 6 | Bonnet Bolt | 4 | A193-B7M |
| 7 | Bonnet | 1 | A105N |
| 8 | Packing | 1Set | GRAPHITE WITH CORROSION INHIBITOR AND DIE FORMED RINGS |
| 9 | Gland Bolt | 2 | A276-410 |
| 10 | Gland Bolt Pin | 2 | A276-410 |
| 11 | Packing Flange | 1 | A276-410 |
| 12 | Gland Flange | 1 | WCB |
| 13 | Nut | 2 | A194-2HM |
| 14 | Stem Nut | 1 | A276-410 |
| 15 | Washer | 2 | A276-410 |
| 16 | Nameplate | 1 | Aluminum |
| 17 | Hand Wheel Nut | 1 | A108-1025 |
| 18 | Hand Wheel | 1 | A197 |

| SIZE | L | H1 | H2 | W | d | D1 | D2 | D3 | D | C | n-b |
|--------|-----|-----|-----|------|-----|-----|-----|--------|------|------|---------|
| 1/2" | 140 | 149 | 163 | ø100 | ø13 | ø16 | ø35 | ø66.6 | ø95 | 14.5 | 4-ø15.8 |
| 3/4" | 152 | 149 | 166 | ø100 | ø13 | ø22 | ø43 | ø82.5 | ø117 | 16 | 4-ø19 |
| 1" | 165 | 171 | 190 | ø125 | ø18 | ø27 | ø51 | ø89 | ø124 | 18 | 4-ø19 |
| 1-1/4" | 178 | 195 | 219 | ø160 | ø24 | ø34 | ø63 | ø98.5 | ø133 | 19 | 4-ø19 |
| 1-1/2" | 190 | 212 | 246 | ø160 | ø29 | ø42 | ø73 | ø114.5 | ø156 | 21 | 4-ø22 |
| 2" | 216 | 240 | 283 | ø180 | ø36 | ø51 | ø92 | ø127 | ø165 | 23 | 8-ø19 |



TITLE: FORGED STEEL BOLTED BONNET GATE VALVE CLASS 300 - API TRIM 8 - INTEGRAL FLANGES

| | | | | | | | | | | | |
|-----|------|-------------|-------|-------|-------|----------------|-------------|----------------------------|------------------------|-----------------|---------------------|
| | | | | | | MARKING SYSTEM | MSS-SP-25 | INSPECTION & TEST: API 598 | MATERIAL: A105N | UNITS: Inch, mm | |
| | | | | | | DIM. OF FLANGE | ANSI B16.5 | SHELL HYDRO 1125PSI | CLASS: 300 | DATE: 01/01/12 | SCALE: N.T.S. |
| | | | | | | FACE TO FACE | ANSI B16.10 | SEAT AIR 80PSI | SIZE: 1/2 - 2" | | FIG. No.: F30F-2N |
| | | | | | | WALL THICKNESS | BS1868 | BACK SEAT HYDRO 815PSI | DRAWN BY: F.J. | | |
| NO. | DATE | DESCRIPTION | PRP'D | REV'D | APP'D | DESIGNED | API 602 | NACE MR 0175 | CHK'D & APR'D BY: R.P. | REV: 1 | DWG No.: 50GA120017 |

1/1/12 ISSUED FOR PROPOSAL