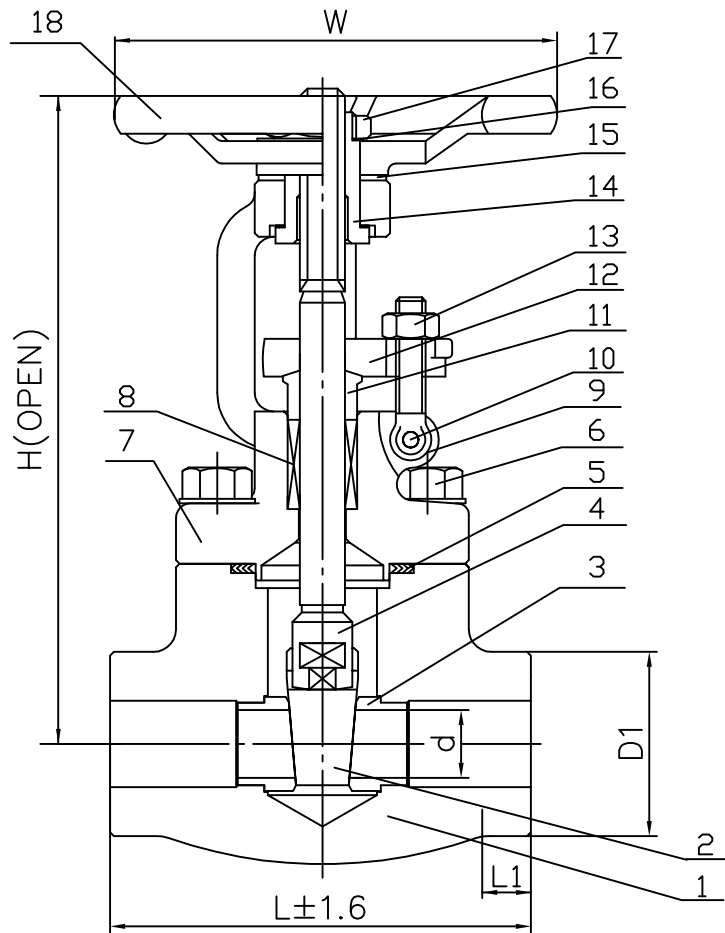
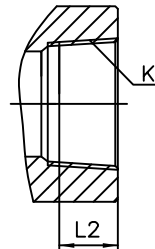


# Class 800 OS&Y BB Gate Valve A105N (API Trim 8) NACE



| SIZE | DN    | in    | d   | L    | W   | D1  | H(OPEN) | K  | L1   | L2 |
|------|-------|-------|-----|------|-----|-----|---------|----|------|----|
| 15   | 1/2   | ø13   | 92  | ø100 | ø42 | 169 | 1/2     | 10 | 15.5 |    |
| 20   | 3/4   | ø18   | 111 | ø125 | ø51 | 193 | 3/4     | 13 | 16.5 |    |
| 25   | 1     | ø24   | 120 | ø160 | ø60 | 230 | 1       | 13 | 19.5 |    |
| 32   | 1 1/4 | ø29   | 120 | ø160 | ø64 | 246 | 1 1/4   | 13 | 21   |    |
| 40   | 1 1/2 | ø36.5 | 140 | ø180 | ø80 | 283 | 1 1/2   | 13 | 21   |    |
| 50   | 2     | ø49   | 178 | ø200 | ø90 | 332 | 2       | 16 | 23   |    |

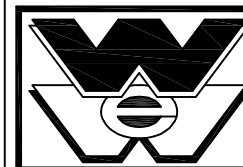


## BILL OF MATERIALS

| NO. | PART NAME      | QTY  | MATERIALS  |
|-----|----------------|------|--|
| 1   | Body           | 1    | A105N  |
| 2   | Disc           | 1    | A276-420   |
| 3   | Seat ring      | 2    | A276-410+HF  |
| 4   | Stem           | 1    | A276-410   |
| 5   | Gasket         | 1    | F304+Graphite  |
| 6   | Bonnet Bolt    | 4    | A193-B7M   |
| 7   | Bonnet         | 1    | A105N  |
| 8   | Packing        | 1Set | GRAPHITE WITH CORROSION INHIBITOR AND DIE FORMED RINGS |
| 9   | Gland Bolt     | 2    | A193-410   |
| 10  | Gland Bolt Pin | 2    | A276-410   |
| 11  | Packing Flange | 1    | A276-420   |
| 12  | Gland Flange   | 1    | WCB  |
| 13  | Nut            | 2    | A194-2HM   |
| 14  | Stem Nut       | 1    | A276-410   |
| 15  | Washer         | 2    | A276-410   |
| 16  | Nameplate      | 1    | STAINLESS STEEL  |
| 17  | Hand Wheel Nut | 1    | A108-1025  |
| 18  | Hand Wheel     | 1    | A197   |

WILLIAM E.

WWW.WILLIAMSVALVE.COM



**WILLIAMS**  
VALVE CORPORATION

38-52 REVIEW AVENUE  
LONG ISLAND CITY, NY 11101

TEL: 718-392-1660  
FAX: 718-729-5106

TITLE: FORGED STEEL BOLTED BONNET  
GATE VALVE - CLASS 800 - API TRIM 8 - FULL PORT

MATERIAL: A105N

UNITS: Inch, mm

CLASS: 800

DATE: 01/01/12

SCALE: N.T.S.

SIZE: 1/2 - 2"

FIG. No.:

F87XS-2N (sw. by thr. ends)  
F87SW-2N (sw. ends)  
F87T-2N (thr. ends)

DRAWN BY: F.J.

CHK'D & APR'D BY: R.P.

REV: 1

DWG No.: 50GA120257

| NO. | DATE | DESCRIPTION | PRP'D | REV'D | APP'D | MARKING SYSTEM | MSS-SP-25 | INSPECTION & TEST: API 598 |
|-----|------|-------------|-------|-------|-------|----------------|-----------|----------------------------|
|     |      |             |       |       |       | FACE TO FACE   | API 602   | SHELL HYDRO 2975PSI        |
|     |      |             |       |       |       | WALL THICKNESS | BS1868    | SEAT AIR 80PSI             |
|     |      |             |       |       |       | DESIGNED       | API 602   | BACK SEAT HYDRO 2175PSI    |
|     |      |             |       |       |       |                |           | NACE MR 0175               |

1/1/12 ISSUED FOR PROPOSAL