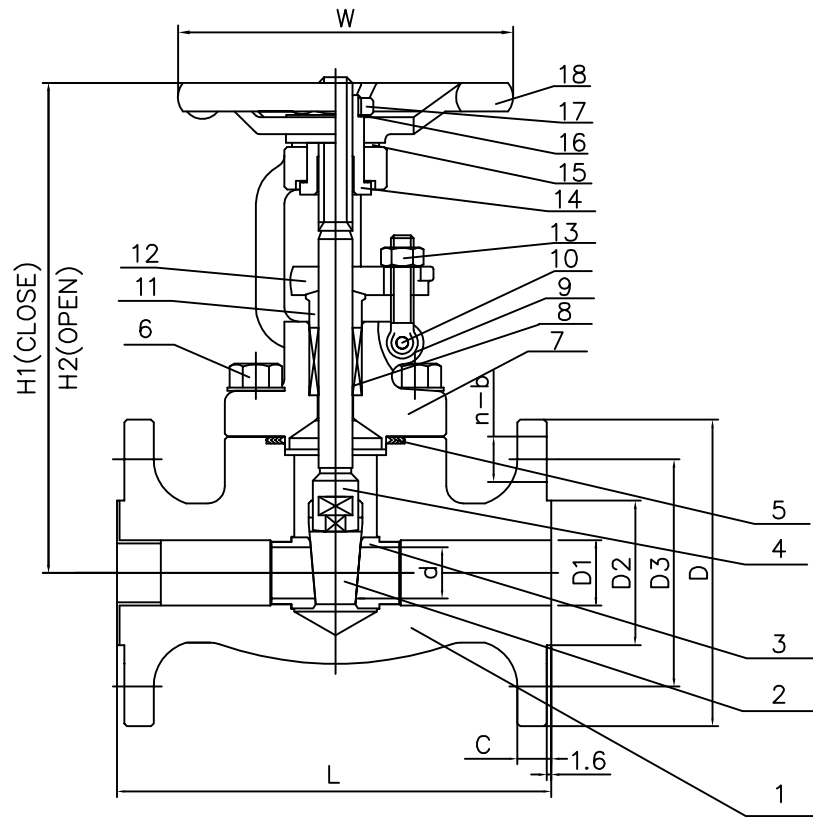


Wm. E. Williams No. FS30F62N 316 Class 300 RF OS&Y BB Gate Valve F316 (API Trim 12) NACE



ITEM	PART NAME	QTY	MATERIAL
1	Body	1	A182-F316
2	Disc	1	A276-316
3	Seat ring	2	A276-316+HF
4	Stem	1	A276-316
5	Gasket	1	304+Graphite
6	Bonnet Bolt	4	A193-B8M
7	Bonnet	1	A182-F316
8	Packing	1Set	GRAPHITE WITH CORROSION INHIBITOR AND DIE FORMED RINGS
9	Gland Bolt	2	A276-316
10	Gland Bolt Pin	2	A276-316
11	Packing Flange	1	A276-410
12	Gland Flange	1	WCB
13	Nut	2	A194-8M
14	Stem Nut	1	A276-410
15	Washer	2	A276-410
16	Nameplate	1	STAINLESS STEEL
17	Hand Wheel Nut	1	A108-1025
18	Hand Wheel	1	A197

SIZE	L	H1	H2	W	d	D1	D2	D3	D	C	n-b
1/2"	140	149	163	ø100	ø13	ø16	ø35	ø66.6	ø95	14.5	4-ø15.8
3/4"	152	149	166	ø100	ø13	ø22	ø43	ø82.5	ø117	16	4-ø19
1"	165	171	190	ø125	ø18	ø27	ø51	ø89	ø124	18	4-ø19
1-1/4"	178	195	219	ø160	ø24	ø34	ø63	ø98.5	ø133	19	4-ø19
1-1/2"	190	212	246	ø160	ø29	ø42	ø73	ø114.5	ø156	21	4-ø22
2"	216	240	283	ø180	ø36	ø51	ø92	ø127	ø165	23	8-ø19



TITLE: FORGED STAINLESS STEEL BOLTED BONNET GATE VALVE
CLASS 300 - API TRIM 12 - INTEGRAL FLANGES

						MARKING SYSTEM	MSS-SP-25	INSPECTION & TEST:	API 598	MATERIAL:	F316	UNITS:	Inch, mm			
						DIM. OF FLANGE	ANSI B16.5	SHELL	HYDRO	1100PSI	CLASS:	300	DATE:	01/01/12	SCALE:	N.T.S.
						FACE TO FACE	ANSI B16.10	SEAT	AIR	80PSI	SIZE:	1/2 - 2"	FIG. No.: FS30F-62N 316			
						WALL THICKNESS	BS1868	BACK SEAT	HYDRO	800PSI	DRAWN BY:	F.J.				
NO.	DATE	DESCRIPTION	PRP'D	REV'D	APP'D	DESIGNED	API 602	NACE MR	0175	CHK'D & APR'D BY:	R.P.	REV:	1	DWG No.:	50GA120019	

1/1/12 ISSUED FOR PROPOSAL