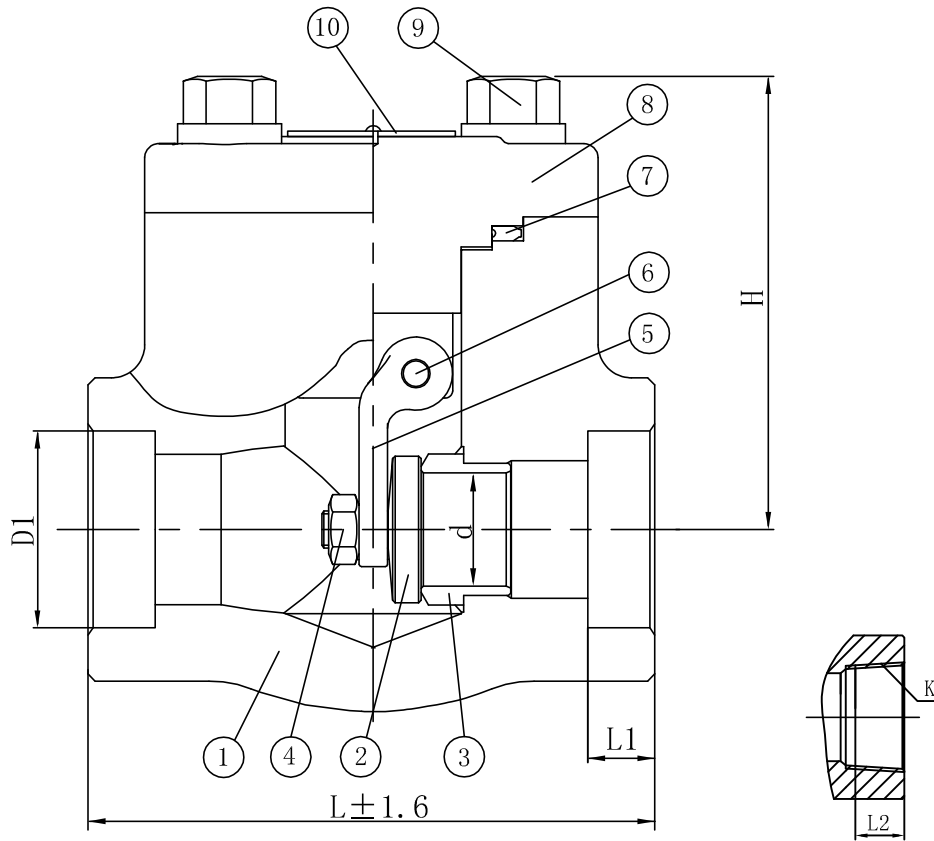


Class 800 BB Swing Check Valve F316 (API Trim 12) NACE



BILL OF MATERIALS			
NO.	PART NAME	QTY.	MATERIAL
1	BODY	1	A182-F316
2	DISC	1	A276-F316
3	SEAT RING	1	A276-F316+HF
4	NUT	1	A194-8M
5	ROCKER	1	F316
6	DOWEL	1	A276-F316
7	GASKET	1	304+Graphite
8	BONNET	1	F316
9	BONNET BOLT	4	A193-B8M
10	NAMEPLATE	1	STAINLESS STEEL

Valve Size in	L	d	D1	L1	K	L2	H
1/2"	79	10	21.7	10	1/2"	15.5	62
3/4"	92	13	27.2	13	3/4"	16.5	63
1"	111	18	33.9	13	1"	19.5	78
1 1/4"	120	24	42.7	13	1 1/4"	21	82
1 1/2"	120	29	48.8	13	1 1/2"	21	110
2"	140	36.5	61.2	16	2"	23	120

WILLIAM E. VALVE CORPORATION
 WWW.WILLIAMSVALVE.COM
 38-52 REVIEW AVENUE
 LONG ISLAND CITY, NY 11101
 TEL: 718-392-1660
 FAX: 718-729-5106

TITLE: FORGED STAINLESS STEEL BOLTED BONNET SWING CHECK VALVE - CLASS 800 - API TRIM 12		
MATERIAL: F316	UNITS: Inch, mm	
CLASS: 800	DATE: 01/01/12	SCALE: N.T.S.
SIZE: 1/2 - 2"	FIG. No.: FS801TXS-62N 316 (sw. by thr. ends) FS801SW-62N 316 (sw. ends) FS801T-62N 316 (thr. ends)	
DRAWN BY: F.J.		DWG No.: 50SC120143
CHK'D & APR'D BY: R.P.	REV: 1	

NO.	DATE	DESCRIPTION	PRP'D	REV'D	APP'D	MARKING SYSTEM	MSS-SP-25	INSPECTION & TEST: API 598
						FACE TO FACE	API 602	SHELL HYDRO 3046PSI
						WALL THICKNESS	BS1868	SEAT AIR 80PSI
						DESIGNED	API 602	BACK SEAT HYDRO 2234PSI
								NACE MR 0175

1/1/12	ISSUED FOR PROPOSAL			
--------	---------------------	--	--	--