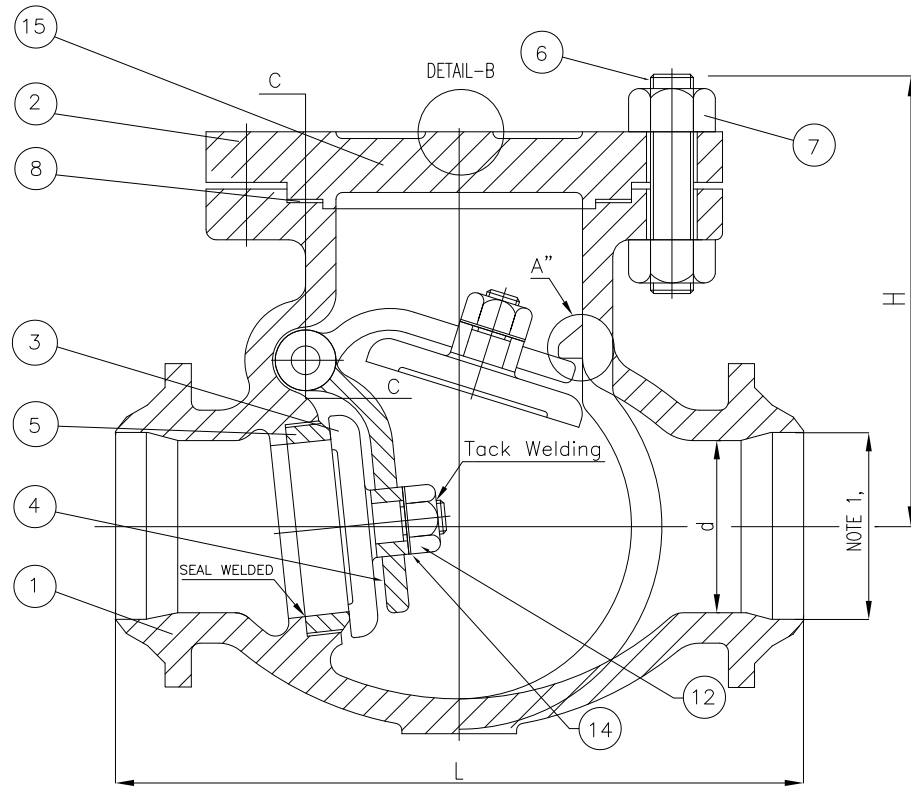


Wm. E. Williams No. 151W2N Class 150 BW Swing Check Valve A216 WCB (API Trim 8) NACE

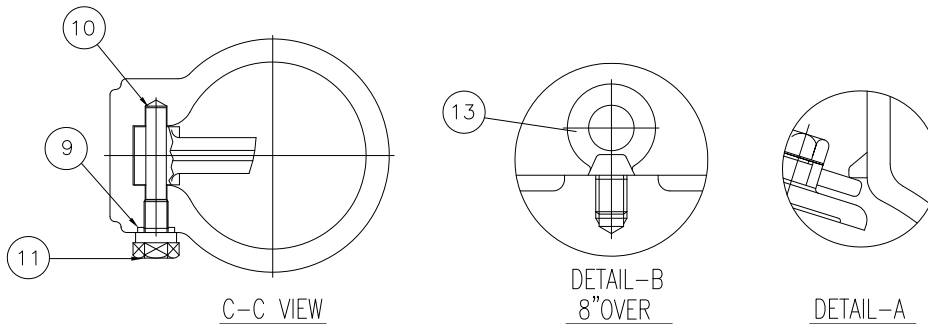


BILL OF MATERIALS			
NO.	PART NAME	MATERIAL	Q'TY
1	BODY	A216Gr WCB	1
2	COVER	A216Gr WCB	1
3	DISC	A216 GR WCB + 13Cr Faced	1
4	ARM	A216Gr WCB	1
5	SEAT RING	A105N + HF	1
6	COVER BOLT	A193Gr B7M	1SET
7	COVER NUT	A194Gr 2HM	1SET
8	GASKET	304+GRAPHITE	1
9	PIN GASKET	GRAPHITE	1
10	HINGE PIN	A479Gr 410	1
11	HINGE BOLT	A193Gr B7M	1
12	DISC NUT	A194Gr 2HM	1
13	EYE BOLT	A193Gr B7M	1
14	WASHER	STEEL	1
15	NAME PLATE	STAINLESS STEEL	1

NOTE:

1. SPECIFY PIPE SCHEDULE No. REQUIRED.

SIZE	d	L	H
2.00	2.00	8.00	5.50
2.50	2.50	8.50	6.25
3.00	3.00	9.50	6.87
4.00	4.00	11.50	8.12
5.00	5.00	13.00	9.00
6.00	6.00	14.00	9.87
8.00	8.00	19.50	11.62
10.00	10.00	24.50	13.00
12.00	12.00	27.50	14.87
14.00	13.25	31.00	15.87
16.00	15.25	34.00	18.25
18.00	17.25	38.50	22.00
20.00	19.25	38.50	24.00
24.00	23.25	51.00	28.50



Remark: Larger sizes available upon request.

NO.	DATE	DESCRIPTION	PRP'D	REV'D	APP'D	DESIGNED	MARKING SYSTEM	MSS-SP-25	INSPECTION & TEST: API 598	MATERIAL: ASTM A216 GR.WCB	UNITS: Inch, mm	
							BUTTWELD ENDS	ANSI B16.25	SHELL	HYDRO	450PSI	SCALE: N.T.S.
							FACE TO FACE	ANSI B16.10	SEAT	AIR	80PSI	FIG. No.: 151W-2N
							WALL THICKNESS	ANSI B16.34	BACK SEAT	HYDRO	315PSI	
								BS1868, ANSI B16.34	NACE MR 0175	CHK'D & APR'D BY: R.P.	REV: 1	DWG No.: 60SC120132

WILLIAM E. WILLIAMS VALVE CORPORATION
 38-52 REVIEW AVENUE LONG ISLAND CITY, NY 11101
 TEL: 718-392-1660 FAX: 718-729-5106

TITLE: CAST STEEL SWING CHECK VALVE CLASS 150 - API TRIM 8 - BUTTWELD