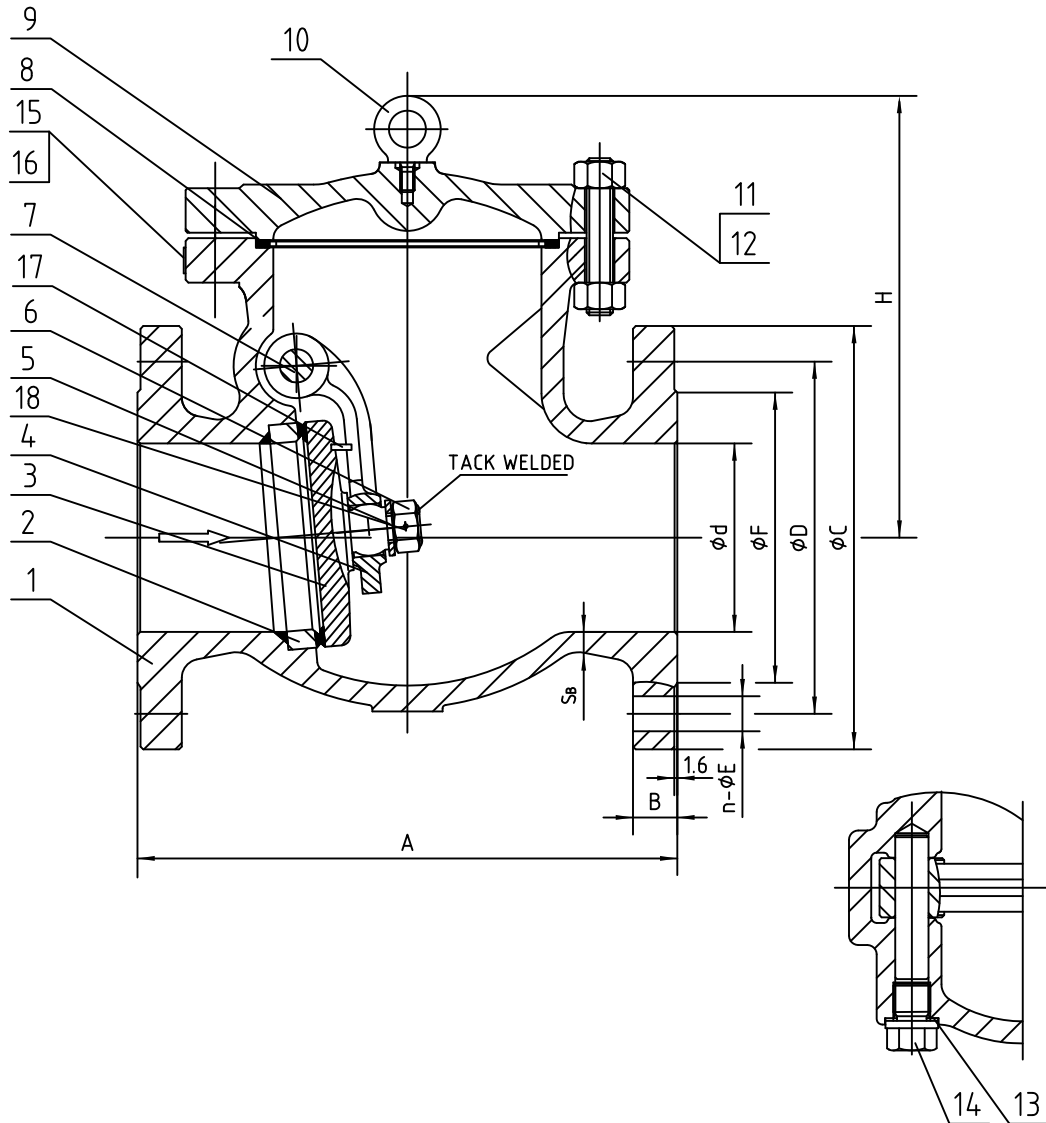


# Wm. E. Williams No. 301F2N Class 300 RF Swing Check Valve A216 WCB (API Trim 8) NACE



ITEM	NAME	MATERIAL	SPECIFICATION	NOTE
1	BODY	CAST STEEL	ASTM A216-WCB	NACE
2	BODY RING	CARBON STEEL	ASTM A105+HF	
3	DISC	CARBON STEEL	ASTM A105+13%Cr	
4	HINGE	CAST STEEL	ASTM A216-WCB	
5	GASKET	STAINLESS STEEL	ASTM A276-410	
6	NUT	STAINLESS STEEL	ASTM A276-410	
7	PIN	STAINLESS STEEL	ASTM A276-410	
8	GASKET	SS304+GRAPHITE		
9	BONNET	CAST STEEL	ASTM A216-WCB	
10	EYEBOLT	CARBON STEEL	ASTM A29-1035	
11	NUT	STEEL	ASTM A194-2HM	
12	BOLT	STEEL	ASTM A193-B7M	
13	GASKET	STAINLESS STEEL	ASTM A276-304	
14	PLUG	STAINLESS STEEL	ASTM A276-410	
15	NAMEPLATE	STAINLESS STEEL	304SS	
16	RIVET	STAINLESS STEEL	304SS	
17	PIN	CARBON STEEL	ASTM A29-1020	
18	PIN	STAINLESS STEEL	316SS	

SIZE	d	A	B	C	D	n	E	F	H	S <sub>d</sub>
2"	51	267	23	165	127	8	19	92	14.9	10
2-1/2"	64	292	26	190	149	8	22	105	16.2	11.5
3"	76	318	29	210	168.5	8	22	127	17.6	11.9
4"	102	356	32	254	200	8	22	157	25.6	12.7
5"	127	400	35	279	235	8	22	186	28.2	14.5
6"	152	444	37	318	270	12	22	216	30.6	15.8
8"	203	533	42	381	330	12	25	270	36.2	18.5
10"	254	622	48	445	387.5	16	29	324	45.4	19
12"	305	711	51	521	451	16	32	381	49.9	20.6
14"	337	838	54	584	514.5	20	32	413	56.2	22.2
16"	387	864	58	648	571.5	20	35	470	61.0	23.8
18"	432	978	61	711	628.5	24	35	533	67.9	25.4
20"	483	1016	64	775	686	24	35	584	72.2	27
24"	584	1346	70	914	813	24	41	692	78.2	30.1

WILLIAM E. WILLIAMS VALVE CORPORATION  
 28-52 REVIEW AVENUE LONG ISLAND CITY, NY 11101  
 TEL: 718-392-1660 FAX: 718-729-5106  
 WWW.WILLIAMSVALVE.COM

TITLE: CAST STEEL SWING CHECK VALVE CLASS 300 - API TRIM 8 - BC. RF

MARKING SYSTEM	MSS-SP-25	INSPECTION & TEST:	API 598	MATERIAL:	ASTM A216 GR.WCB	UNITS:	Inch, mm					
DIM.OF FLANGE	ANSI B16.5	SHELL	HYDRO 1125PSI	CLASS:	300	DATE:	03/26/15					
FACE TO FACE	ANSI B16.10	SEAT	AIR N/A	SIZE:	2" - 24"	SCALE:	N.T.S.					
WALL THICKNESS	ANSI B16.34	HPC SEAT	HYDRO 815PSI	DRAWN BY:	F.J.	FIG. No.:	301F-2N					
NO.	DATE	DESCRIPTION	PRP'D	REV'D	APP'D	DESIGNED	API 594, ANSI B16.34	NACE MR0175	CHK'D & APR'D BY: R.P.	REV: 1	DWG No.:	60SC120128-28

3/26/15	RELEASED	F.J.	R.P.	R.P.
---------	----------	------	------	------