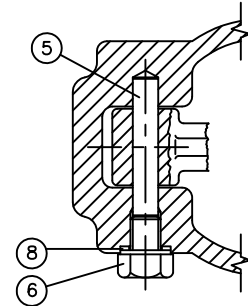
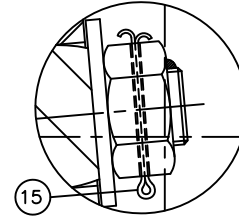
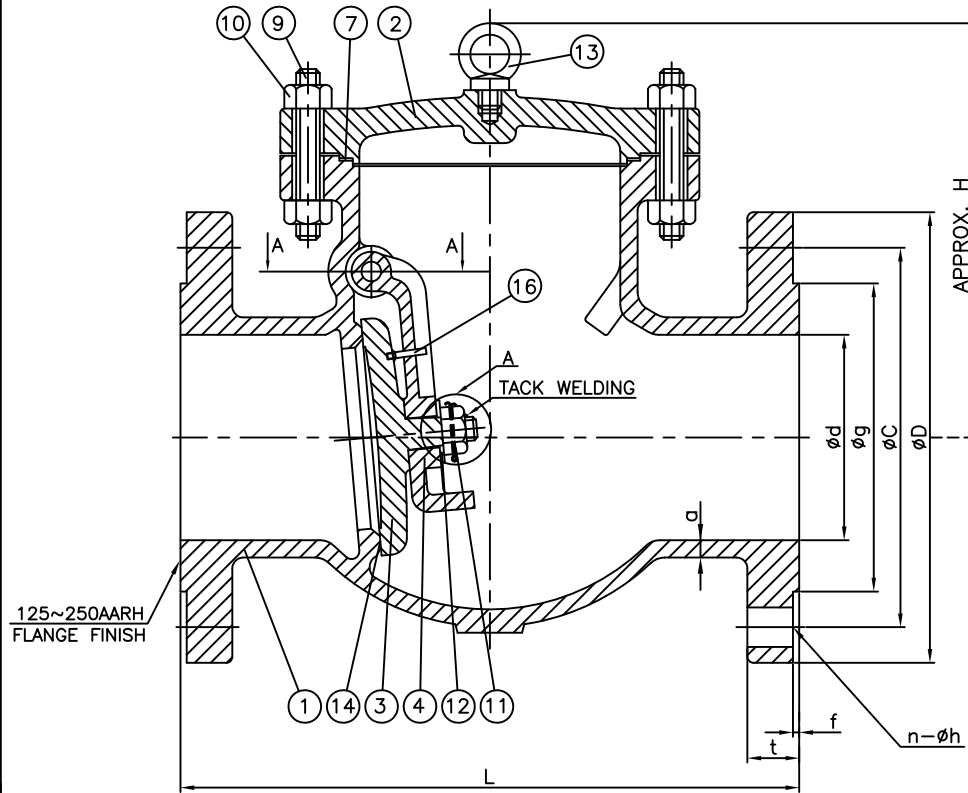


Wm. E. Williams No. S301F6-316 Class 300 R.F. Swing Check Valve ASTM A351 CF8M (API TRIM 10)



SECTION A-A

BILL OF MATERIAL

NO.	PART NAME	MATERIAL	Q'TY	REMARK
1	BODY	A351-CF8M	1	
2	COVER	A351-CF8M	1	
3	DISC	A351-CF8M	1	
4	ARM	A351-CF8M	1	
5	PIN	A479-316	1	
6	PLUG BOLT	A479-316	1	
7	GASKET	SEE NOTE 1.	1	
8	PLUG GASKET	SS316	1	SERRATED
9	COVER BOLT	A193-B8	1SET	
10	NUT	A194-8	1SET	
11	DISC NUT	A194-8	1	
12	WASHER	A240-316	1	
13	EYE BOLT	A193-B8	1	6" & LARGER
14	SEAT RING	A351-CF8M	N/A	INTEGRAL FACED
15	SPLIT PIN	A479-316	1	
16	STOPPER PIN	SS316	2	

NOTE:

1. GRAPHITE OR PTFE: (SPECIFY WHEN ORDERED)

UNIT : mm

SIZE (Inch)	d	L	FLANGE						H
			D	C	g	t	f	n-h	
2	50.8	266.7	165.1	127.0	91.9	22.2	1.6	8-19.1	170
2½	63.5	292.1	190.5	149.4	104.6	25.5	1.6	8-22.2	193
3	76.2	317.5	209.6	168.1	127.0	28.5	1.6	8-22.2	193
4	101.6	355.6	254.0	200.2	157.2	31.8	1.6	8-22.2	223
6	152.4	444.5	317.5	269.7	215.9	36.7	1.6	12-22.2	311
8	203.2	533.4	381.0	330.2	269.7	41.2	1.6	12-25.4	403
10	254.0	622.3	444.5	387.4	323.9	47.6	1.6	16-28.6	472
12	304.8	711.2	520.7	450.9	381.0	50.9	1.6	16-31.8	537
14	336.6	838.2	584.2	514.4	412.8	53.9	1.6	20-31.8	633
16	387.4	863.6	647.7	571.5	469.9	57.2	1.6	20-34.9	698
18	431.8	977.9	711.2	628.7	533.4	60.3	1.6	24-34.9	764
20	482.6	1016.0	774.7	685.8	584.2	63.6	1.6	24-34.9	849
24	584.2	1346.2	914.4	812.8	692.2	69.9	1.6	24-41.3	1098

WILLIAM E. WILLIAMS VALVE CORPORATION
 38-52 REVIEW AVENUE LONG ISLAND CITY, NY 11101
 TEL: 718-392-1660 FAX: 718-729-5106

TITLE: STAINLESS STEEL SWING CHECK VALVE CLASS 300 - API TRIM 10

MARKING SYSTEM	MSS-SP-25	INSPECTION & TEST: API 598	MATERIAL: A351-CF8M	UNITS: Inch, mm
Δ 7/30/15	RELEASED	F.J. R.P. R.P.	CLASS: 300 DATE: 12/03/14	SCALE: N.T.S.
Δ 12/3/14	RELEASED	F.J. R.P. R.P.	FACE TO FACE: ANSI B16.10 SEAT: AIR N/A HPC SEAT: HYDRO 800PSI	FIG. No.: S301F6-316
NO. DATE	DESCRIPTION	PRP'D REV'D APP'D	DESIGNED: API 594, ANSI B16.34	CHK'D & APR'D BY: R.P. REV: 2 DWG No.: 11SC120009-66